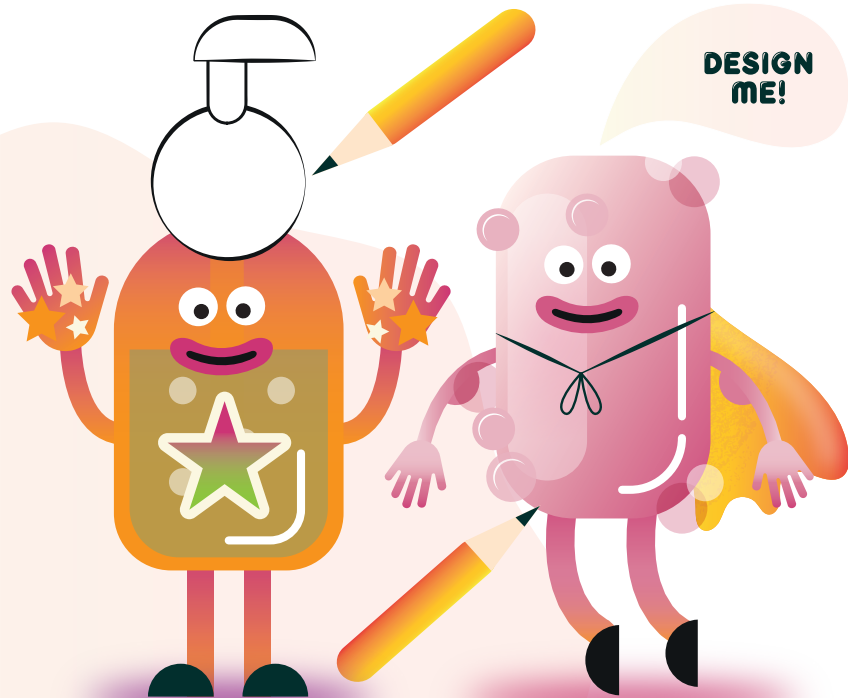


DESIGN A SOAP BOTTLE OR SOAP BAR

LEARNING OUTCOME

Creative – This activity allows children to design their own Soap Bottle/Bar and Towel. The aim is to get them to think about germs and hand washing by understanding the role of the products used for hand hygiene. By using personification, children are more likely to understand which steps are important and why. For example why is soap important and why is it necessary for them to dry their hands thoroughly.



LET'S
CREATE!

PERFECT
FOR
AGES 6-11

INSTRUCTIONS

Duration: 20 minutes

What you will need:

- Soap bottle template
- Soap bar template
- Arts and crafts materials

Method:

Encourage your child to be as imaginative and creative as they can be. However it is important to encourage them to think about the role of germs, soap, water and drying. Using prompts, you can encourage them to add in features that are associated with those roles, for example bubbles. It is also helpful to emphasise that soap makes germs slippery. Get them to think about what is important to include on a soap bottle. How can they portray the role of soap? For example they could draw germ characters being engulfed in soap. An angry face would suggest that it is bad.

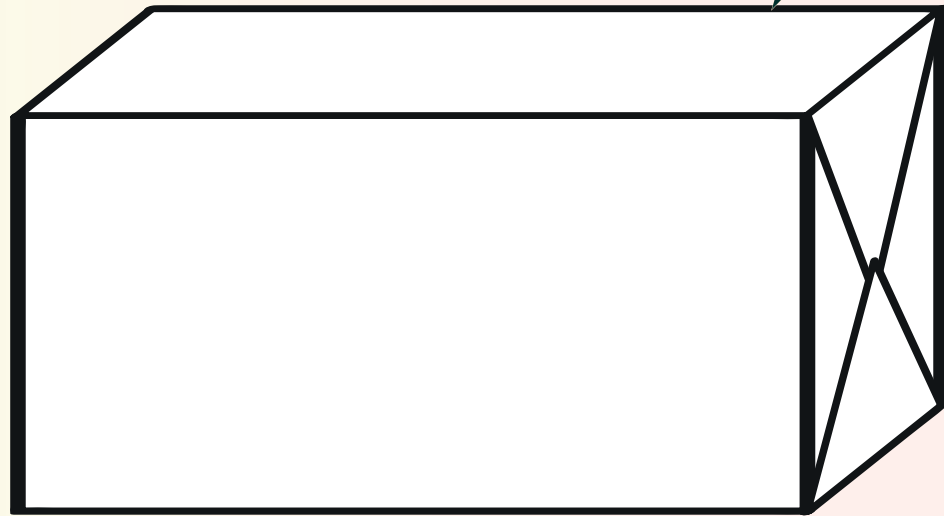
Harder version: they could design an actual soap bottle and include messages about why hand washing is important?

SUPER SOAP BAR

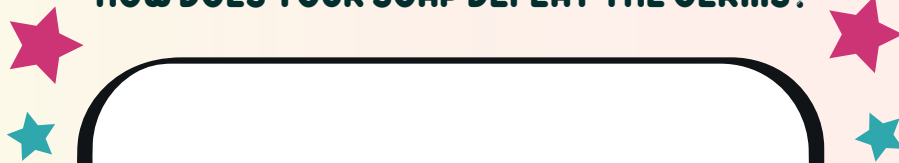


Design and name your own soap bar below:

NAME: _____



HOW DOES YOUR SOAP DEFEAT THE GERMS?



← COLOUR YOUR BAR OF SOAP IN

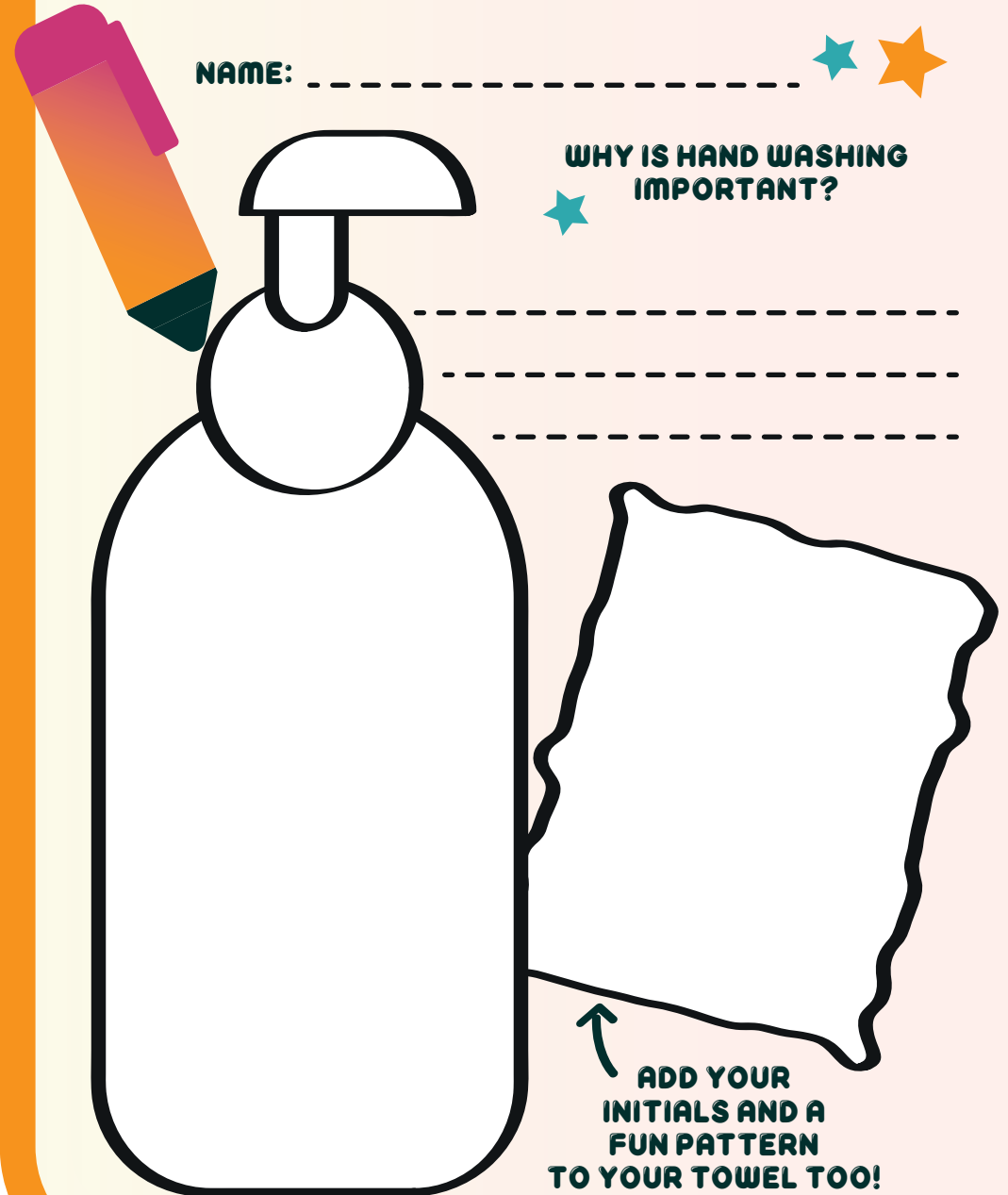


SUPER SOAP BOTTLE

Design and name your own soap bottle below:

NAME: _____ ★ ★

★ WHY IS HAND WASHING IMPORTANT?



↑ ADD YOUR INITIALS AND A FUN PATTERN TO YOUR TOWEL TOO!